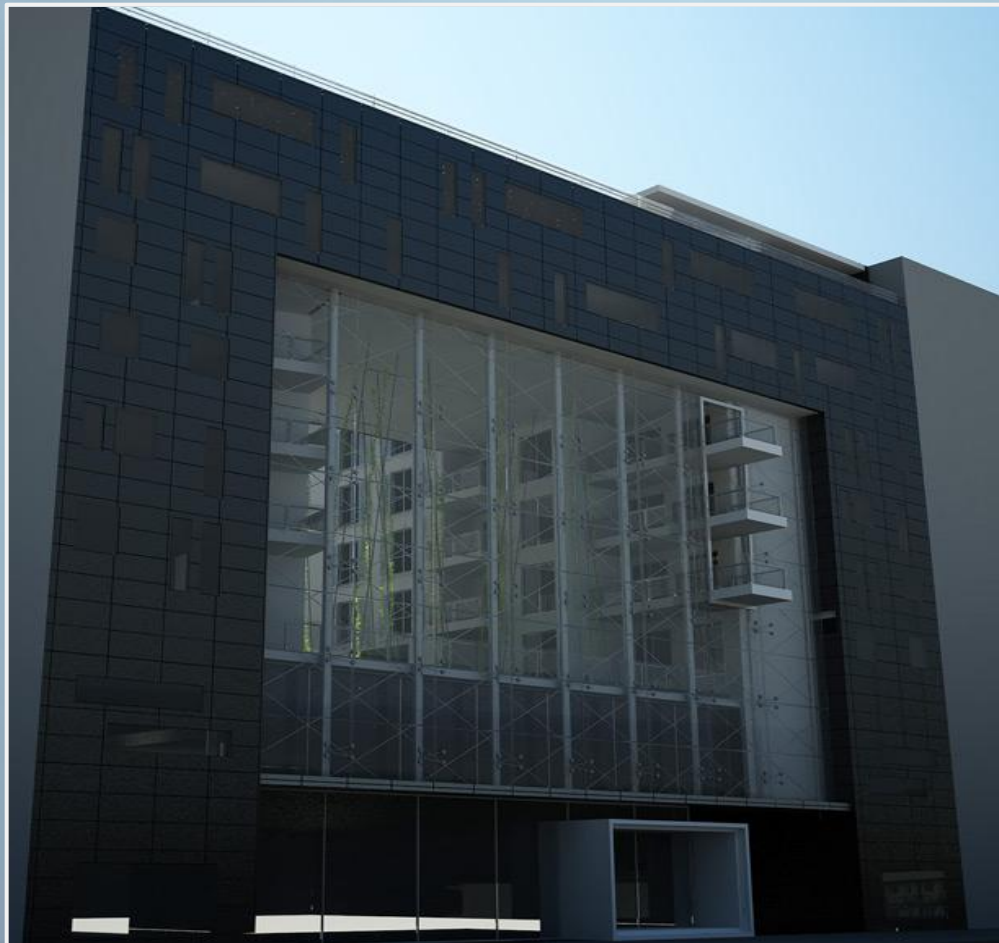


Project

Dimitrija Tucovica

RESIDENTIAL / BUSINESS BUILDING



SERBIA



Borderline / Neighbouring countries:

- BiH 302 km
- Bulgaria 318 km
- Croatia 241 km
- Hungary 151 km
- Kosovo 351.6 km
- Macedonia 62.3 km
- Montenegro 124.4 km
- Romania 476 km

- Location: Central part of the Balkan Peninsula, South-East Europe
- Area of 88,631 sq.km
- Population of 8 million approx.
- Capital: Belgrade - 2 million inhabitants approx.
- Belgrade is situated at the confluence of the Sava and Danube rivers
- One of the oldest cities in Europe, located on intersection of Eastern and Western Europe road network

BELGRADE



- **Situated at the confluence of the Sava and Danube rivers**
- **Covers an area of 322.268 ha**
- **Population: 2 million inhabitants approx.**
- **City of Belgrade participate with approximately 34% in complete Serbian economy**
- **Divided into 17 municipalities**
- **Industrial, economic ,touristic ,cultural, social, educational and political center of Serbia**
- **Nikola Tesla airport - largest international airport in the region**
- **Two new bridges connecting major parts of the city , to be built**



Satellite view of the project location



Project location

- The asset is located at Dimitrija Tucovica Street no. 32-38, at Zvezdara Municipality
- Municipality Zvezdara has approx. 163,000 inhabitants
- Asset is located at one of the main traffic arteries with perfect connection to all parts of the city
- Great connectivity via public transportation
- In its nearby is Boulevard Kralja Aleksandra Street, one of the main shopping and pedestrian zones
- 2.5 km away from Downtown
- 3 km away from the E – 70 Highway
- 19 km away from the International Airport “Nikola Tesla”



Surroundings:

1. Vukov Spomenik Square
2. Sport Center and park “Tasmajdan”
3. Law Faculty
4. Green Market “Kalenic”
5. “Sveti Sava” Temple
6. Shopping Mall “Zira”

Project description

RESIDENTIAL / BUSINESS BUILDING

About the project:

Total surface: **1.617 m²**

Build up area(ground floor) gross : **6.400 m²**

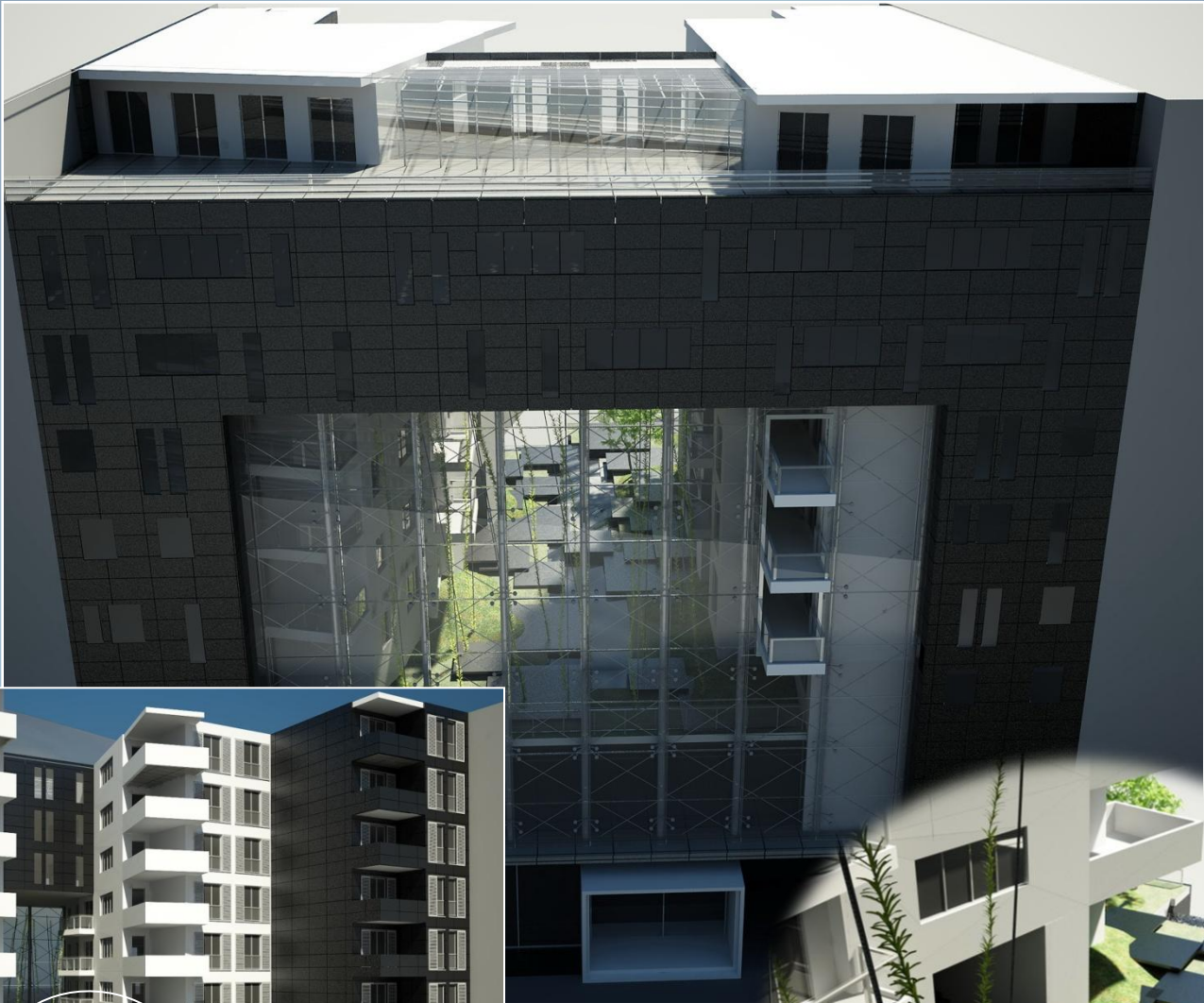
Flooring: **UG + G + 6 + AT**

Ownership: **clear**

The future mix use project in Dimitrija Tucovica street no.32-38 will cover 6.400 m² gross of residential and commercial space. The project is located in a very attractive place along the street Dimitrija Tucovica that rapidly changes its appearance in a street of modern architecture, only 2,5 km from the central pedestrian zone(Knez Mihajlova street). Its potential is recognized by many investors who build tens of thousands sq.m of housing and sale space.



Concept
idea



Yu Kapital
Belgrade

Dobracina 29
11000 Belgrade, Serbia
phone: +381 11 303 73 20
+381 11 303 73 21
fax: +381 11 262 89 08
e-mail: office@yukapital.com
www.yukapital.com